

Andreas Pflüger

**... das klingt dann so...**

für Bassposaune und Tonspur



Andreas Pflüger

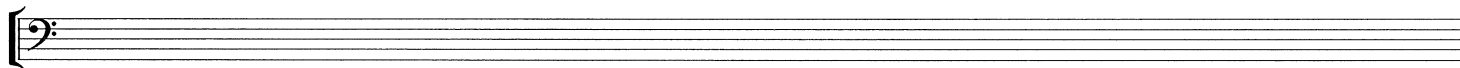
**... das klingt dann so...**

für Bassposaune und Tonspur



# 1.

0'00"



0'10"

0'20"

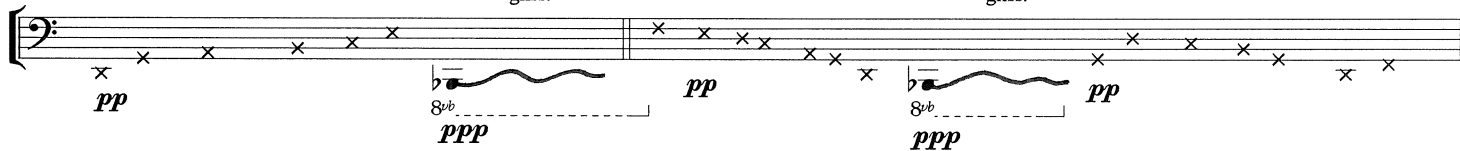
Ploppgeräusch  
ungefähre Tonhöhe

gliss.

Ploppgeräusch  
ungefähre Tonhöhe

gliss.

Ploppgeräusch  
ungefähre Tonhöhe

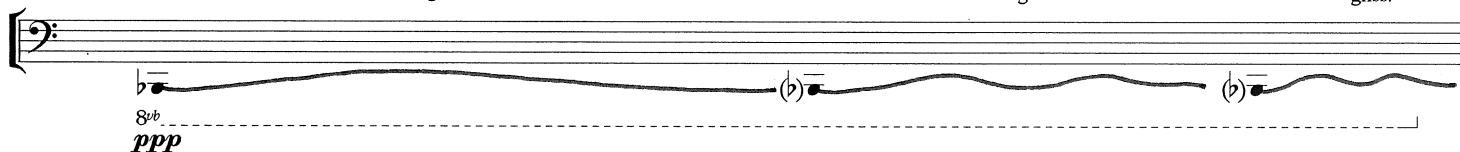


0'30"

gliss.

gliss.

gliss.



0'40"

gliss.

gliss.

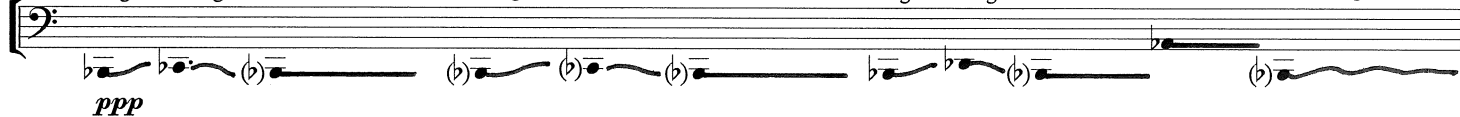
gliss.

gliss.

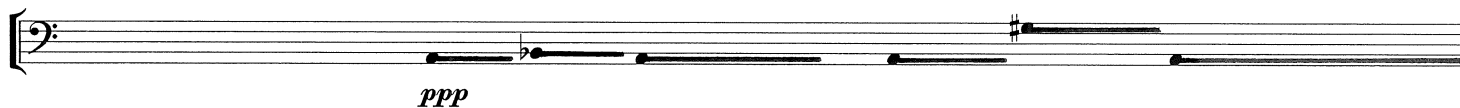
gliss.

gliss.

gliss.



0'55"



1'10"



1'20"



1'30" *singen & spielen wahwah* *gliss.* *gliss.* *singen & spielen wahwah* *gliss.*

O A O U O A E  
*p*

1'40" *oberer Ton gesungen unterer Ton gespielt* *pp* *singen & spielen wahwah* *gliss.*

*pp* O A O  
*p*

1'50" *singen & spielen wahwah* *gliss.* *gliss.* *gliss.* *Ploppgeräusch ungefähre Tonhöhe* *mf*

O A O A I *mf*

2'00" *singen & spielen wahwah* *gliss.* *gliss.* *Ploppgeräusch ungefähre Tonhöhe schnelle Folge* *mf*

O O A *mf*

2'10" *con sord.* *pp* *fff*

*pp* *fff*

2'20" *senza sord.* *unregelmässig* *mf* *p* *p* *mf*

*mf* *p* *p* *mf*

2'30" *mf* *p > mf* *f* *mf < f* *mf < f*

*mf* *p > mf* *f* *mf < f* *mf < f*

2'40" *f < ff* *f* *f < ff* *mf*

*f < ff* *f* *f < ff* *mf*

2'50" *f* *sfz* *f* *fff*

*f* *sfz* *f* *fff*

3'00"

*sfz* *sfz* *p* *gliss.* *pp*

3'15"

*sfz* *sfz* *sfz* *p* *gliss.* *ppp*

3'30"

Flutterzunge

*pp* *sfz* *sehr flüchtig* *pp* *pp*

3'40"

Flutterzunge

*pp* *sehr flüchtig* *pp* *pp*

3'50"

Flutterzunge

*p* *3* *ff* *Flutterzunge* *p* *3* *ff*

4'00"

Triolentempo wie Triolen der Tonspur

*fff*

4'15"

*ppp*

4'25"

nur singen *gliss.* *gliss.* *gliss.*

S (stimmhaft) O S (st.h.) O V (st.h.) S (st.h.) A O KLI

*mf*

4'35"

*gliss.* *gliss.* *gliss.*

S (st.h.) O KLI A O

4'43"

*pp*

5'02"

5'12"

5'23"

5'33"

5'44"

5'55"

6'04"

*gliss.*

*fff* *pp*



6'10"

Musical staff in bass clef with a *pp* dynamic marking. The staff contains a sequence of notes: a half note, followed by a quarter note triplet, and then a series of eighth notes.

6'20"

Musical staff in bass clef. It begins with a quarter note triplet, followed by a series of eighth notes.

6'28"

Musical staff in bass clef. It features a quarter note triplet followed by eighth notes.

6'36"

Musical staff in bass clef. It contains a series of eighth notes, some of which are grouped in triplets.

6'45"

Aufwärtsbewegung, beliebige  
sehr kurze Töne

Musical staff in bass clef showing a continuous upward melodic line with very short notes. A *pp* dynamic marking is at the start and a *fff* marking is at the end. A triplet of notes is indicated with a '3' above the staff.

7'00"

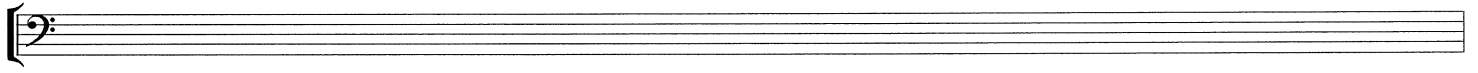
oberer Ton gesungen  
unterer Ton gespielt

7'10"

Musical staff in bass clef with a *mp* dynamic marking. It shows a series of notes with a *ppp* dynamic marking at the end. A *mp* marking is also present at the end of the staff.

# 2.

(7'10")



7'20"

Fl.z.

unregelmässige Abwärtsbewegung  
beliebige Noten

Musical notation for 7'20" in bass clef with one sharp. It starts with a fortissimo (fff) dynamic and a fermata over a single note. This is followed by a series of notes with a downward slant, indicating an irregular downward movement. The dynamic ends at mezzo-forte (mf).

*fff* *mf*

7'30"

Fl.z. unregelm.

Fl.z. unregelm.

Musical notation for 7'30" in bass clef with one sharp. It features a triplet of notes starting with a forte (f) dynamic, which then transitions to fortissimo (fff). The piece concludes with a fermata over a single note, also marked fortissimo (fff).

*f* *fff* *fff*

7'40"

unregelmässige Abwärtsbewegung  
beliebige Noten

Musical notation for 7'40" in bass clef with one sharp. It begins with an irregular downward movement of notes. This is followed by a series of notes with a downward slant, ending with a fermata over a single note. The dynamic is mezzo-forte (mf).

*mf*

7'50"

Musical notation for 7'50" in bass clef with one sharp. It consists of four groups of notes, each with a downward slant. The first group starts with a mezzo-forte (mf) dynamic.

*mf*

7'56"

Musical notation for 7'56" in bass clef with one sharp. It features four groups of notes with downward slants, continuing the melodic development.

8'02"

Musical notation for 8'02" in bass clef with one sharp. It features four groups of notes with downward slants.

8'08"

Musical notation for 8'08" in bass clef with one sharp. It features seven groups of notes with downward slants, ending with a piano (ppp) dynamic.

*ppp*

8'15"

8'20"

singen & spielen

8'30"

Spaltklang

pos. ord.

gliss.

gliss.

SO.....  
*mf*

*p*

*pp*

8'40"

8'50"

9'00"

singen

gespielt

oben singen  
unten spielen

singen & spielen

SO.....  
*mf*

klingt.....

*mf*

*p*

SO.....  
*p*

9'10"

9'20"

9'30"

oben singen  
unten spielen

pos. ord.

gliss.

gliss.

singen

pos. ord.

*p*

*mf*

klingt..  
*mf*

dann...

*pp*

9'40"

*pp*

*fff*

9'50"

*fff*  $\triangleright$  *f*

10'04"

10'14"

gliss.

*mf*

10'20"

con sord. mit viel Luft im Ton

Ploppgeräusch

con sord. mit viel Luft im Ton

Ploppgeräusch

*mf*  $\triangleright$  *pp*

*f*

*mf*  $\triangleright$  *pp*

*f*

10'30"

con sord. mit viel Luft im Ton

Plopp-geräusch

*f* *p* *pp* *p* *mf* *p* *p*

10'40"

Plopp-geräusch

con sord. mit viel Luft im Ton

mit viel Luft im Ton

*sfz* *p* *f* *pp* *f* *sfz* *p* *ff*

10'50"

Plopp-geräusch

mit viel Luft im Ton

*mf* *p* *sfz* *p* *p* *sfz* *pp* *p* *pp* *ppp*

11'00" *accelerando im Rhythmus der Tonspur*

*gliss.* *pp* *singen* *spielen* *singen* *spielen*

SO... SO...

11'10"

*singen* *spielen* *gliss.* *singen* *spielen* *singen* *spielen*

*f* *f* *f* *mf* *ff* *mf*

das klingt dann... SO... das klingt

11'20"

*singen* *spielen* *singen* *spielen*

*f* *mf* *ff* *ff* *sfz*

dann so... das klingt das klingt

11'30"

*singen* *spielen* *singen* *spielen* *singen* *spielen* *singen*

*f* *mf* *f* *mf* *f* *sfz* *f*

SO... SO... klingt dann

11'40"

*singen* *gliss.* *singen* *spielen* *singen* *spielen*

*f* *ff* *mf* *f* *f* *ff* *ff* *ff*

so... das klingt das klingt das klingt

11'50"

*gesprochen*

*mf* *pp*

...das klingt dann so.....